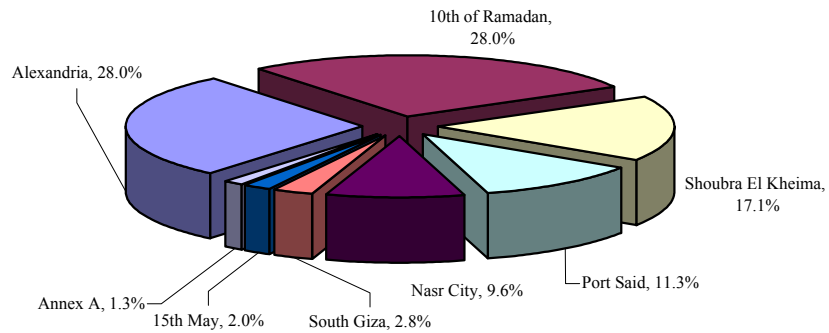


QIZ Statistics - 397 Companies Approved in Feb. 2005

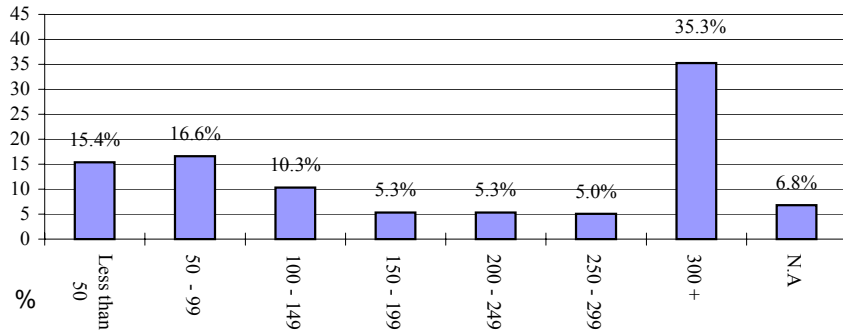
Distribution of listed companies by location

Location	Freq.
Alexandria	111
10th of Ramadan	111
Shoubra El Kheima	68
Port Said	45
Nasr City	38
South Giza	11
15th May	8
Annex A	5
Total	397



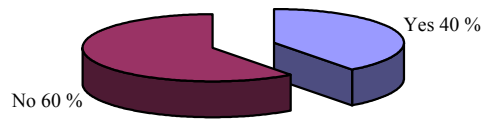
Distribution of Listed Companies by size of Labor (total no. of workers)

Workers Category	Freq.
Less than 50	61
50 - 99	66
100 - 149	41
150 - 199	21
200 - 249	21
250 - 299	20
300 +	140
N.A	27
Total	397



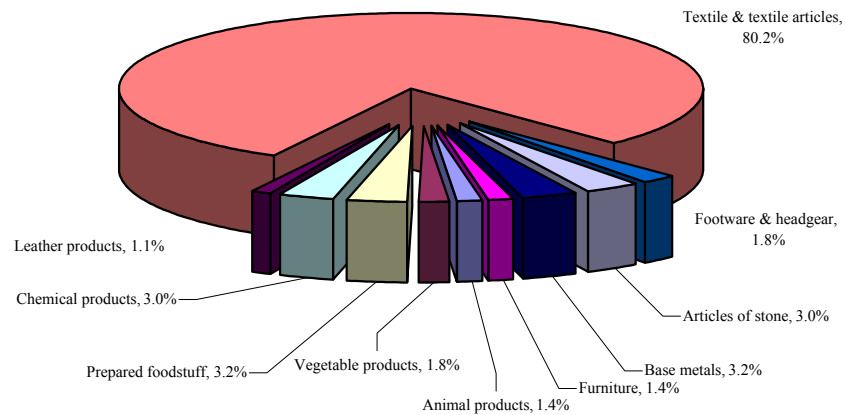
Distribution of listed companies by export Situation

Export to US	Freq.
Yes	157
No	240
Total	397



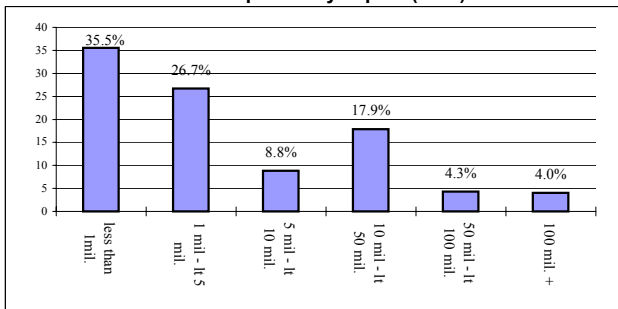
Distribution of listed companies by main Chapter of HS code of products*

Chapter	Freq.
Animal products	6
Vegetable products	8
Prepared foodstuff	14
Chemical products	13
Leather products	5
Textile & textile articles	355
Footware & headgear	8
Articles of stone	13
Base metals	14
Furniture	6
Total	442



* Repeated answers allowed

Distribution of listed companies by capital (EGP)



Distribution of listed companies by Investment (EGP)

