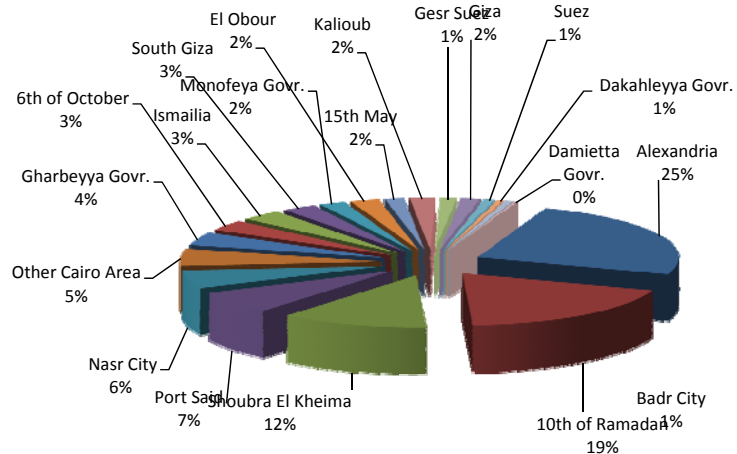


**QIZ Company Statistics - 779 Companies approved until 06/06/2010**

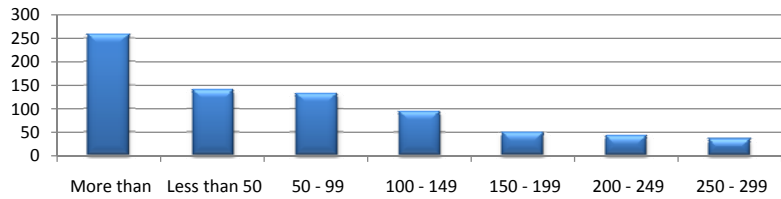
Distribution of listed companies by location

Location	Freq.
Alexandria	193
10th of Ramadan	147
Shoubra El Kheima	92
Port Said	55
Nasr City	44
Other Cairo Area	41
Gharbeyya Govr.	32
6th of October	26
Ismailia	26
South Giza	21
Monofeya Govr.	16
El Obour	18
15th May	12
Kalioub	16
Gesr Suez	10
Giza	12
Suez	7
Dakahleyya Govr.	4
Badr City	5
Damietta Govr.	2
<b>Grand Total</b>	<b>779</b>



Distribution of listed companies by labor (total no. of workers)

Worker Category	Freq.
More than 300	258
Less than 50	141
50 - 99	133
100 - 149	95
150 - 199	48
200 - 249	42
250 - 299	35
N.A	27
<b>Grand Total</b>	<b>779</b>

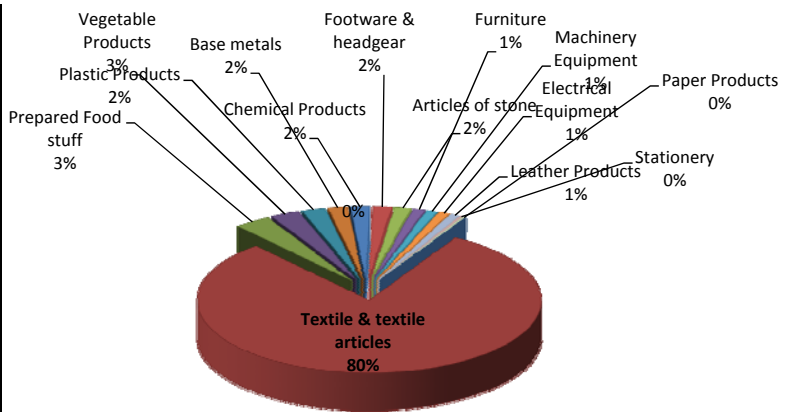


Distribution of listed companies by export situation

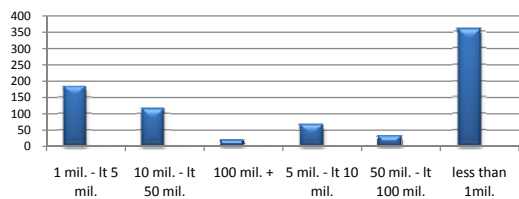
export situation	Freq.
No	612
Yes	167
<b>Grand Total</b>	<b>779</b>



Sector1	Freq.
Textile & textile articles	623
Prepared Food stuff	26
Vegetable Products	21
Plastic Products	17
Base metals	14
Chemical Products	14
Footware & headgear	14
Articles of stone	12
Furniture	9
Machinery Equipment	8
Electrical Equipment	8
Leather Products	7
Stationery	2
Paper Products	2
Animal Products	2
<b>Grand Total</b>	<b>779</b>



Distribution of listed companies by capital (EGP)



Distribution of listed companies by investments (EGP)

